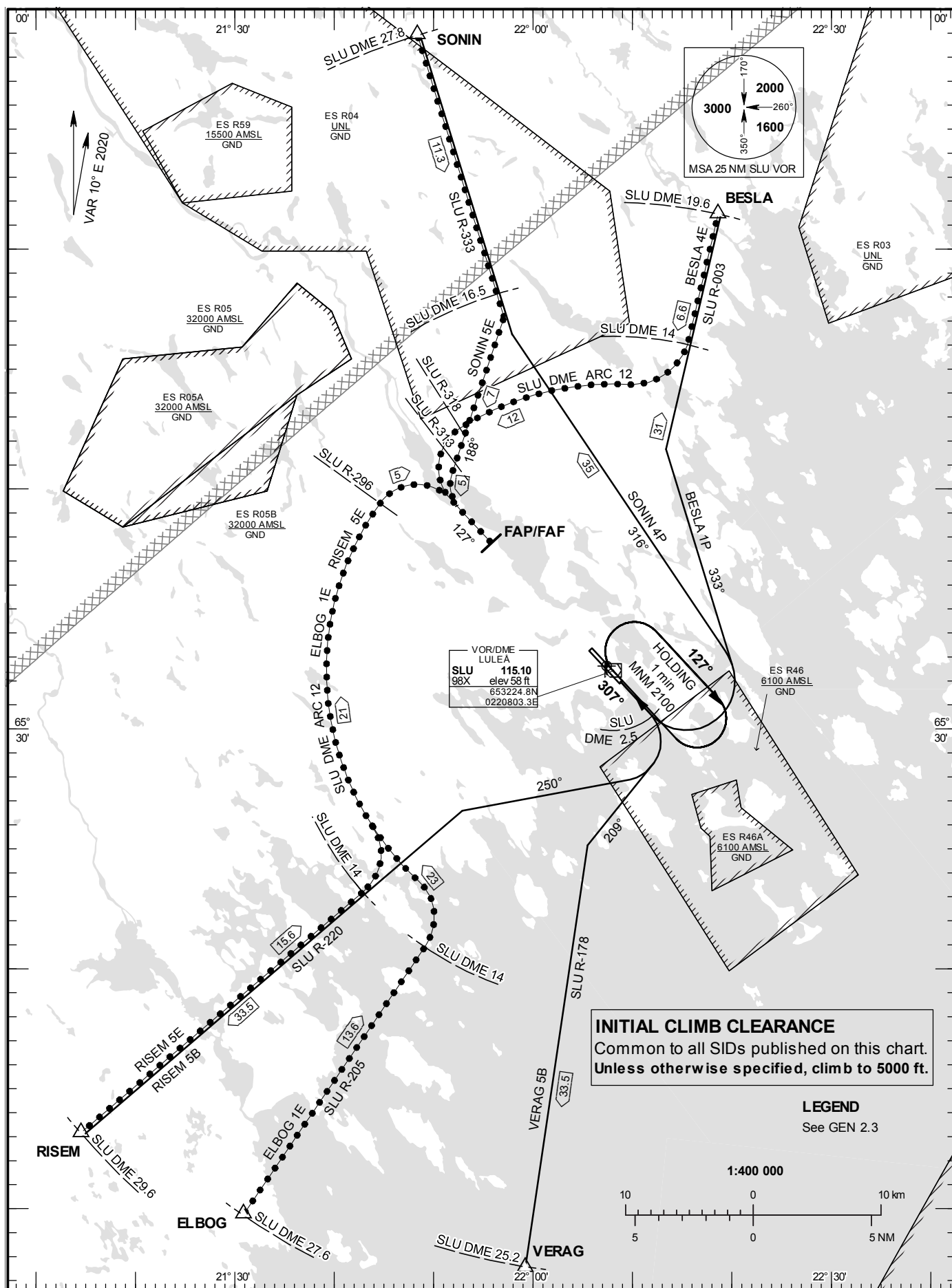


**STANDARD INSTRUMENT  
DEPARTURE AND ARRIVAL  
CHART (SID/STAR) - ICAO**

HGT and ALT in ft  
BRG are MAG  
TA 5000 ft AMSL

KALLAX TOWER	128.200
KALLAX APPROACH	125.450



**LULEÅ/Kallax**

**DEPARTURE (SID) RWY 14**

REMARK

MNM climb gradient required by ATC: Aircraft proceeding on SID shall use 6.6% (400 ft/NM). Aircraft unable to confirm to this procedure shall inform ATC accordingly

**BESLA ONE PAPA DEPARTURE (BESLA 1P)**

(For PROP ACFT only.)

Straight ahead to SLU DME 2.5 (MNM 230 ft/NM until SLU DME 2.5). Turn left to track 333°, intercept SLU R-003 and proceed to BESLA..

**RISEM FIVE BRAVO DEPARTURE (RISEM 5B)**

Straight ahead to SLU DME 2.5. Turn right to track 250°, intercept SLU R-220 and proceed to RISEM.

**SONIN FOUR PAPA DEPARTURE (SONIN 4P)**

(For PROP ACFT only.)

Straight ahead to SLU DME 2.5 (MNM 230 ft/NM until SLU DME 2.5). Turn left to track 316°, intercept SLU R-333 and proceed to SONIN.

**VERAG FIVE BRAVO DEPARTURE (VERAG 5B)**

Straight ahead to SLU DME 2.5. Turn right to track 209°, intercept SLU R-178 and proceed to VERAG.

**ARRIVAL (STAR) RWY 14**

**BESLA FOUR ECHO ARRIVAL (BESLA 4E)**

At BESLA intercept SLU R-003 and proceed to SLU DME 14.0. Turn right and proceed on SLU DME ARC 12. At SLU R-318, turn left and intercept LOC PA, not below 2100 ft until FAP/FAF.

**ELBOG ONE ECHO ARRIVAL (ELBOG 1E)**

At ELBOG intercept SLU R-205 and proceed to SLU DME 14.0, not below 2500 ft. Turn left and proceed on SLU DME ARC 12. At SLU R-296, turn right and intercept LOC PA, not below 2100 ft until FAP/FAF.

**RISEM FIVE ECHO ARRIVAL (RISEM 5E)**

At RISEM intercept SLU R-220 and proceed to SLU DME 14.0, not below 2500 ft. Turn left and proceed on SLU DME ARC 12. At SLU R-296, turn right to intercept LOC PA, not below 2100 ft until FAP/FAF.

**SONIN FIVE ECHO ARRIVAL (SONIN 5E)**

At SONIN intercept SLU R-333 and proceed to SLU DME 16.5, not below 2500 ft. Turn right to track 188°. At SLU R-313, turn left to intercept LOC PA not below 2100 ft until FAP/FAF.